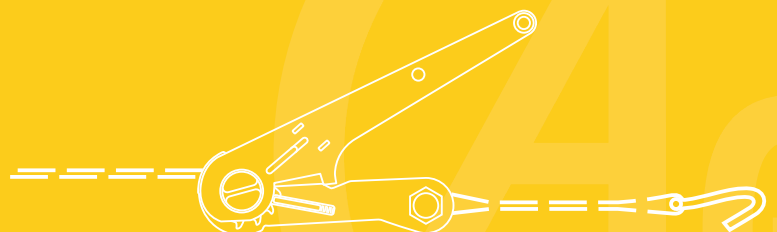
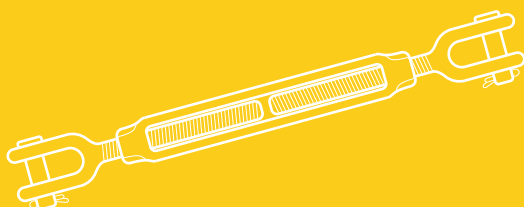
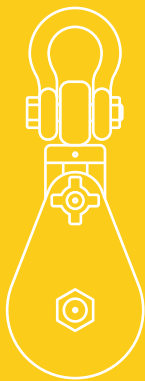
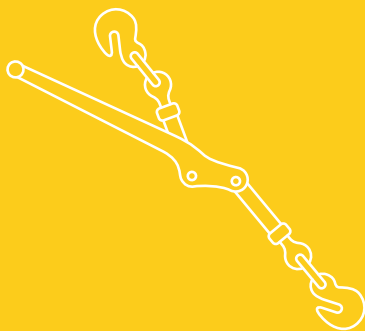
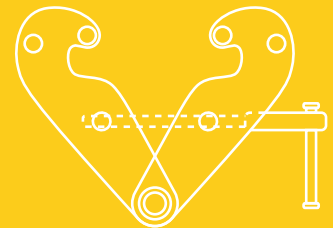
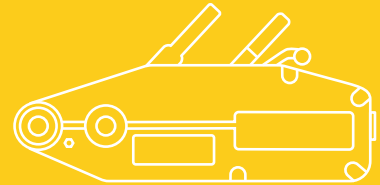
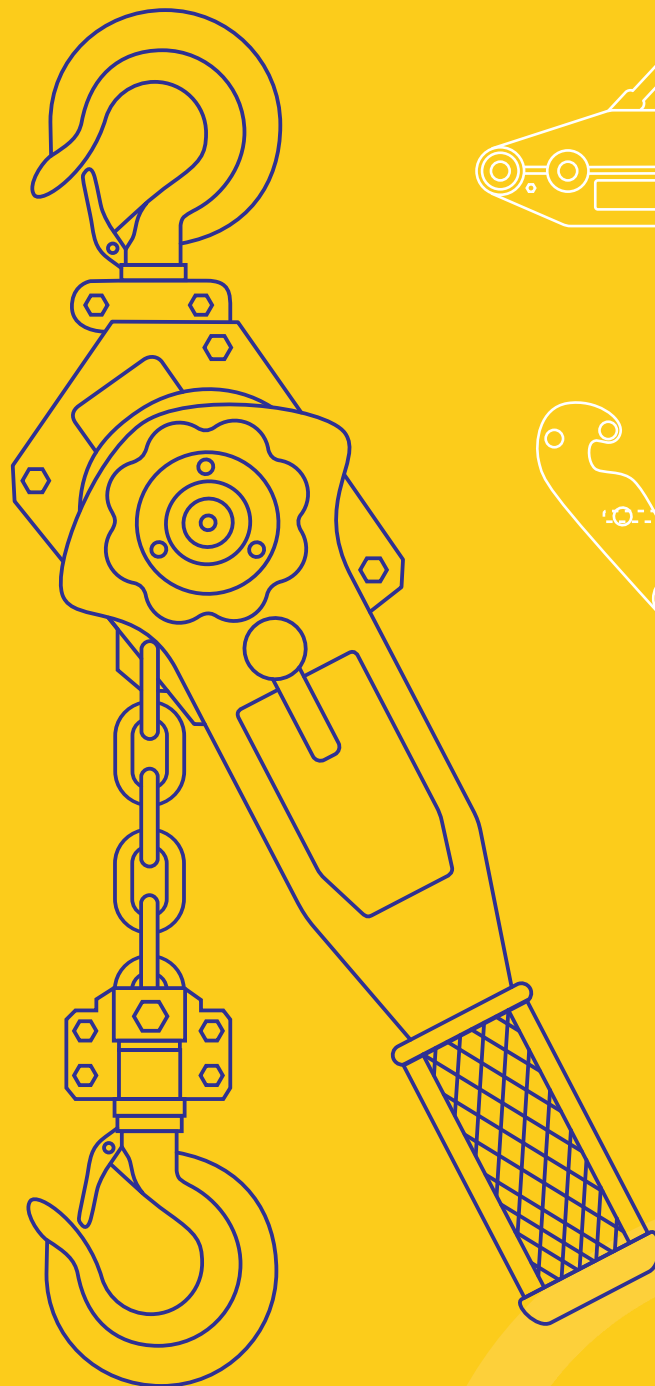


# LOBESAFE

## LOBESAFE PRODUCT CATALOGUE



**GLOBESAFE IS COMMITTED TO PROVIDING THE HIGHEST QUALITY  
LIFTING AND LASHING PRODUCTS AT A COMPETATIVE COST**

Globesafe recognised from the very beginning that our customers need quality, reliability, continuity, and safety excellence.

All the staff at Globesafe are committed to the active development of our partnerships in order to deliver and exceed what our customers expect from our products, services and our unique "Active Safety" program.

**LIFTING AND RIGGING PRODUCTS FOR THE OIL AND GAS INDUSTRIES**

Our products include a large range of lifting, rigging and marine equipment

Chain and Fittings, Hoisting & Material Handling equipment

Load restraint, Rigging hardware and Slings.

All produced to the highest quality control procedures possible.

Globesafe products, expertise and partnerships are designed to ensure the Supply and Safe Installation of all the Lifting and Rigging systems which are essential to Industrial and Offshore Industrys.

Our "Active Safety" policy and practices clearly demonstrate that everyone and everything we do reflects our commitment to the safety of personnel, equipment and the environment.

Globesafe Approved Distributors are all provided with In Depth Product Training Enabling them to Repair and Re-certify our Products Competently at their Premises.

## **INDEX**

- 1. CHAIN HOIST**
- 2. LEVER HOIST**
- 3. WIRE ROPE PULLING HOIST**
- 4. BEAM CLAMP**
- 5. BEAM TROLLEY**
- 6. HEAVY DUTY SNATCH BLOCK**
- 7. POLYESTER WEBBING SLING**
- 8. POLYESTER ROUND SLING**
- 9. TURNBUCKLES**
- 10. WIRE ROPE THIMBLE**
- 11. WIRE ROPE CLIP**
- 12. RATCHET TIE DOWN**
- 13. LOAD BINDER**
- 14. TRANSPORT CHAIN AND FITTINGS**

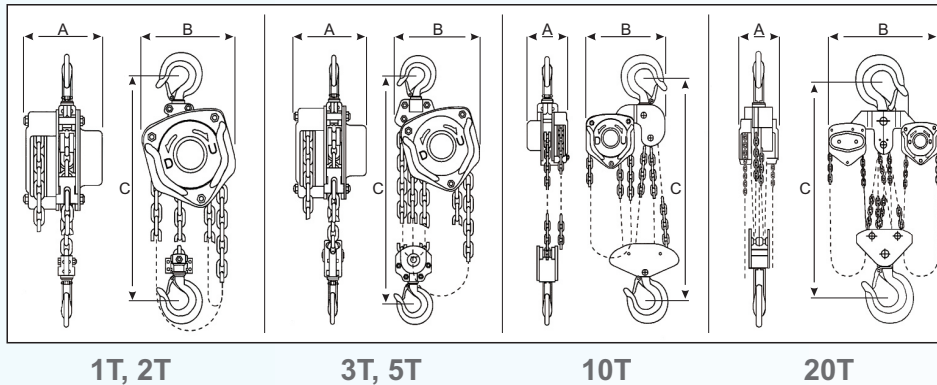


# GLOBESAFE LTD

## GLOBESAFE PRODUCTS

### GSC - MANUAL CHAIN HOIST

The GSC1 – 20 range of Manual Chain Hoists are specifically designed for use in the on-shore and offshore construction industry. Engineered to withstand the daily activities in this harsh environment whilst supporting a full range of safety features.



### Product Features

- Wide range of Capacities from 0.5t – 20t, with all H.O.L catered for.
- User Friendly – Lightweight compact construction, with low effort for maximum load.
- Construction is all steel for impact resistance.
- Fully Forged Hooks fitted with Safety latches, in-case of overload they shall yield but not fracture.
- Hand wheel cover profiled to provide smooth operations and multi angles.
- Automatic double Pawl braking system with increased performance friction discs.
- Fitted as standard with high grade load chain in accordance with ISO requirements.
- All bearings fully sealed for harsh operating environments.
- Minimal Maintenance.
- All units tested at 1.5 times the WLL and supplied with complete certification.
- Our unique “ARCTIC” range is available on request (specially modified for very low temperatures)
- Manufactured in compliance with the EC Machinery Directive 98/37 EC and ASME B30.

Model	GSC1	GSC1.5	GSC2	GSC3	GSC5	GSC10	GSC20
Capacity (ton)	1	1.5	2	3	5	10	20
Standard Lift (m)	2.5	2.5	3	3	3	3	3
Running Test Load (Kn)	15	22.5	30	45	75	150	300
Effort Required to Lift Max. Load (N)	309	320	360	340	414	414	828
Headroom(Drawn close up) Hmin (mm)	317	399	414	465	636	798	890
No. of Falls of Load Chain	1	1	1	2	2	4	8
Load Chain Diameter (mm)	6	8	8	8	10	10	10
Dimensions (mm)	A	140	161	161	161	186	207
	B	158	174	187	199	253	398
	C	317	399	414	465	636	798
	hook opening	28	36	33.5	40	50	64
Net Weight (kg)	12	19	20	27	45.5	83	193
Extra Weight per Meter Extra Lift (kg)	1.7	2.3	2.3	3.7	5.6	9.7	19.4

### Operational Cautions

- Do not exceed WLL (Working Load Limit)
- Not to be used for lifting people.
- To be operated by suitable qualified personnel only.
- Inspect all lifting equipment prior to operating.  
(Globesafe can supply Pre-Use check lists and Manuals on request)

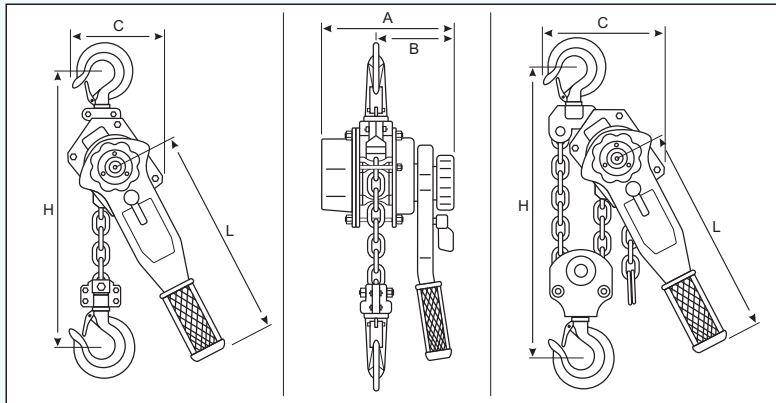


# GLOBESAFE LTD

## GLOBESAFE PRODUCTS

### GSL - LEVER HOIST

The GSL1 – 9 range of Lever hoists are specifically designed with the requirements of the offshore and onshore construction industry in mind. A very user friendly unit designed for hoisting and pulling in all directions and in the smallest of accesses. The smooth operation makes it an ideal choice for all positioning applications.



3/4T, 1-1/2T & 3T

6T



LEVER HOIST

### Product Features

- Wide range of capacities from 750kgs to 9000kgs, with all H.O.L catered for.
- User Friendly – Lightweight compact construction, with low effort for maximum load.
- Construction is all steel for impact resistance.
- Short lever with rubber grip for operator comfort even with gloves.
- Little manual effort required for max load due to optimal gear ratios.
- Fully forged hooks fitted with Safety latches, in-case of overload they shall yield but not fracture.
- Fitted as standard with high grade load chain in accordance with ISO requirements.
- Minimal maintenance.
- All units tested at 1.5 times the WLL and supplied with complete certification.
- De-Clutching operation allows chain to be pulled through manually in both directions when hoist is under no load.
- Open frame design for easy on-site inspection and cleaning.
- Our unique “ARCTIC” range is available on request (specially modified for very low temperatures)
- Manufactured in compliance with the EC Machinery Directive 98/37 EC and ASME B30

Model		GSL 0.75	GSL 1.5	GSL 3	GSL 6	GSL 9
Capacity (tons)		0.75	1.5	3	6	9
Standard lift (m)		1.5	1.5	1.5	1.5	1.5
Running test load (Kn)		11.0	22.1	44.1	88.2	132.3
Headroom(drawn close up) Hmin (mm)		325	380	480	620	700
Effort required to lift max. load (N)		140	220	320	340	360
No. of falls of load chain		1	1	1	2	3
Load chain (mm)		6X18	8X24	10X30	10X30	10X30
Dimensions (mm)	A	145	175	203	203	203
	B	86	100	118	118	118
	C	122	130	150	205	316
	D	37	45	50	64	85
Length of lever handles (mm)	L	280	410	410	410	410
Net weight (kg)		7.5	11.5	21	31.5	47
Extra weight per meter extra lift (kg)		0.8	1.4	2.2	4.4	6.6

### Operational Cautions

- Do not exceed WLL (Working Load Limit)
- Not to be used for lifting people.
- To be operated by suitable qualified personnel only.
- Inspect all lifting equipment prior to operating.  
(Globesafe can supply Pre-Use check lists and Manuals on request)





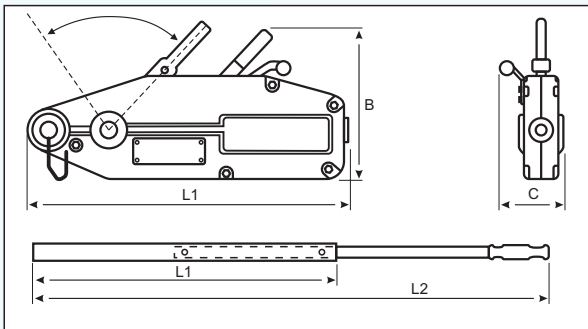
# GLOBESAFE LTD

## GLOBESAFE PRODUCTS

### GSPM - WIRE ROPE PULLING MACHINE

The GSPM is an extremely rugged and portable Machine designed for heavy duty hoisting and pulling of loads over long distances. This unit is very suitable for use in a wide range of industries such as construction, shipbuilding and heavy fabrication.

All units supplied with Standard 20mtr rope fitted with latch hook and extendable operating lever.



### Product Features

- Low maintenance and very easy to service.
- Very smooth operation for precise positioning.
- Large Jaw area for minimum wear on rope.
- Overload protection device fitted so no overload possible.
- Lightweight aluminum construction giving a very versatile and portable unit yet tough enough for life long service.
- Manufactured in compliance with the EC Machinery Directive 98/37 EC and ASME B30.

MODEL		GSPM 8	GSPM 16	GSPM 32
Lifting Capacity (kg)		800	1600	3200
Rated Pulling Capacity (kg)		1250	2500	5000
Rope Advance per Full Stroke (mm)		60	60	40
Lever Pull at WLL (kg)		25	30	50
Rope Diameter (mm)		8.3	11	16
Standard Length of Wire Rope (m)		20	20	20
Net Weight Without Cable (kg)		7	14	23
Max Overall Size (cm)	A (Overall Length of Body)	426	545	660
	B (Overall Height of Body)	235	280	325
	C (Overall Width of Body)	64	97	116
Lever Length	L1(cm)		80	80
Lever Length	L2(cm)	80	120	120

### Operational Cautions

- Do not exceed WLL (Working Load Limit)
- Not to be used for lifting people.
- To be operated by suitable qualified personnel only.
- Only use specialist wire rope approved by distributor, use of standard ropes may cause failure.
- Inspect all lifting equipment prior to operating.  
(Globesafe can supply Pre-Use check lists and Manuals on request)

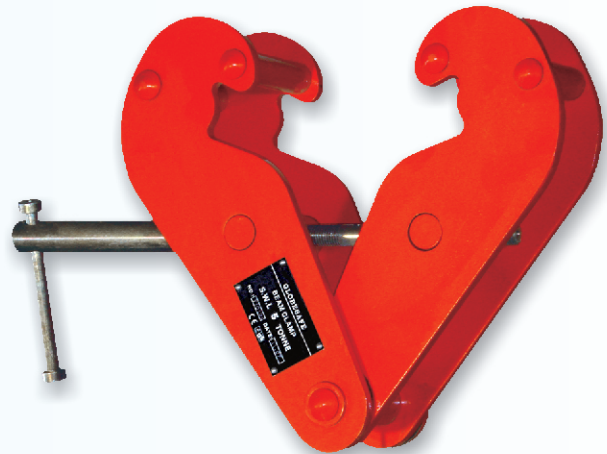
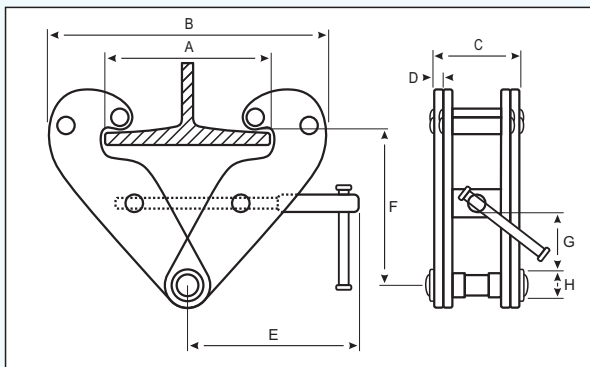


# GLOBESAFE LTD

## GLOBESAFE PRODUCTS

### GSBC - BEAM CLAMP

The GSBC Beam Clamp is a simple but effective beam clamp for providing a semi-permanent lifting/pulling point on the flange of structural beams.



### Product Features

- Manufactured in compliance with the EC Machinery Directive 98/37 EC and ASME B30.
- All steel fabricated construction to provide strength and durability in all environments.
- Wide jaw design for maximum load distribution on flange.
- Built in suspension bar for use in low headroom applications, shackle suspension also available.
- Fully adjustable over a range of flange widths.
- Maintenance Free.
- Our unique "ARCTIC" range is available on request (specially modified for very low temperatures)

Model		GSBC 1	GSBC 2	GSBC 3	GSBC 5	GSBC 10
Capacity		1T	2T	3T	5T	10T
Test Load	KN	19.6	39.2	58.8	98	196
Flange Width	mm	75-220	75-220	80-320	80-320	90-320
Dimensions(mm)	Max.A	260	260	354	354	365
	Min.B	180	180	235	235	320
	Max.B	360	360	490	490	505
	C	64	74	103	110	120
	D	5	6	8	10	12
	E	215	215	260	260	280
	Max.F	155	155	225	225	235
	Min.F	102	102	140	140	170
	Min.G	25	25	45	45	50
	H	22	22	24	28	40
Net Weight	kg	4.5	5	10.5	11	16

### Operational Cautions

- Do not exceed WLL (Working Load Limit)
- For side load limits, please contact the distributor for load restrictions.
- Not to be used for lifting people.
- To be operated by suitable qualified personnel only.
- Inspect all lifting equipment prior to operating.  
(Globesafe can supply Pre-Use check lists and Manuals on request)

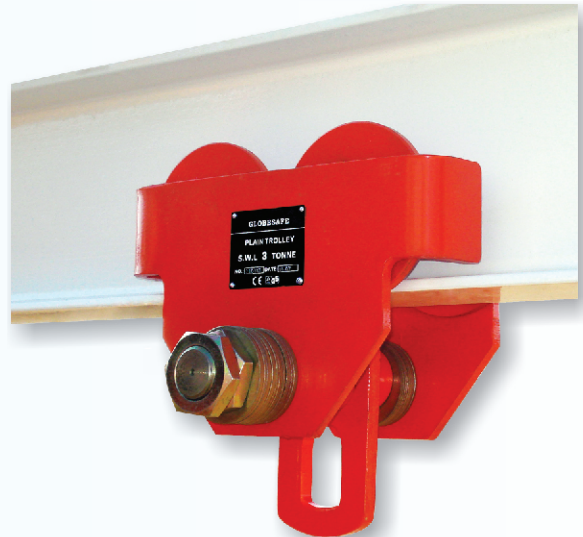
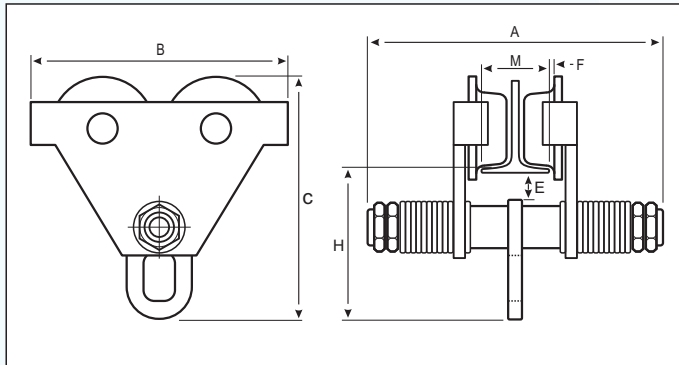


# GLOBESAFE LTD

## GLOBESAFE PRODUCTS

### GSBT - BEAM TROLLEY

The GSBT Beam Trolley is designed to provide a hang off point from the flange of steel beams, the roller bearing wheels allow the loads to safely travel along the beam.



### Product Features

- Manufactured in compliance with the EC Machinery Directive 98/37 EC and ASME B30.
- All steel fabricated construction to provide strength and durability in all environments.
- Fully adjustable over a range of flange widths.
- Can be supplied as manual operated or with chain / geared drive mechanism.
- Wheels fitted with fully sealed permanently lubricated bearings for a maintenance free life.
- Our unique "ARCTIC" range is available on request (specially modified for very low temperatures)

Model (manually operated)		GSBT 0.5	GSBT 1	GSBT 2	GSBT 3	GSBT 5	GSBT 10	GSBT 20
Rated Capacity T		0.5	1	2	3	5	10	20
Dimensions mm	A	230	254	294	344	360	403	475
	B	212	255	302	344	378	455	642
	C	198.5	231.5	278	338	393	490	622
	H	113	128	152	186	219	275.5	315
	F	3	3	3	3	4.5	4.5	4.5
	Emin	12	9	6	10	12	13.5	13.5
I-beam recommended	Mmm	64-140	64-140	76-165	76-203	88-203	125-203	136-203
Net weight kg		7	12	22	30	55	93	235

### Operational Cautions

- Do not exceed WLL (Working Load Limit)
- Side loading is NOT permitted
- Not to be used for lifting people.
- To be operated by suitable qualified personnel only.
- Inspect all lifting equipment prior to operating.  
(Globesafe can supply Pre-Use check lists and Manuals on request)



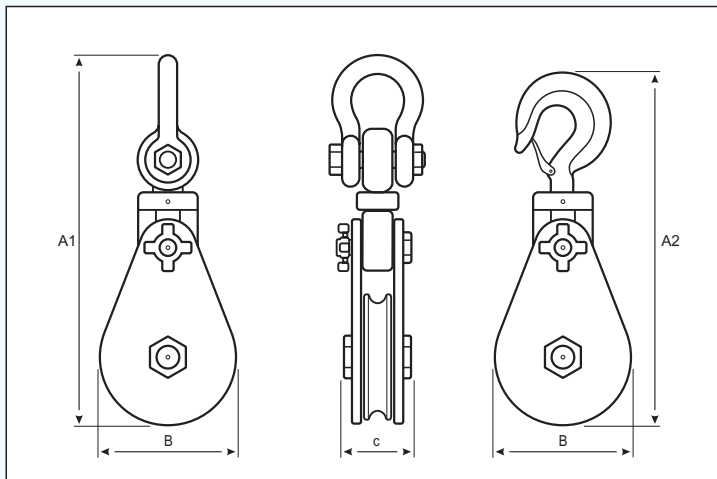
# GLOBESAFE LTD

## GLOBESAFE PRODUCTS

### HEAVY DUTY SNATCH BLOCK.

#### GSSB - HEAVY DUTY SNATCH BLOCK

The GSSB is industry proven, Robust Heavy Duty Snatch Block with limitless applications throughout the Oilfield, Construction, Marine and Rigging sectors. Developed over the years to combine safety with operator friendly specification.



#### Product Features

- Manufactured in compliance with the EC Machinery Directive 98/37 EC and ASME B30.
- All steel fabricated construction to provide strength and durability in all environments.
- Fully removable shackle head fitting. Hook head fitting available on request.
- 360 Degree swiveling Head fitting with 180 degree pivot grease lubricated.
- Side gate wire entry for easy operations.
- Gate opening load pin fitted with R Clip.
- Bronze Bush Bearing with external lubrication point through sheave pin.
- Hardened steel sheave to provide long trouble free life for both block and applied wire ropes.
- Factor of Safety 4:1. Can be rated on 5:1 on request
- Wide range of sheave diameters to suit all applications.
- Our unique "ARCTIC" range is available on request (specially modified for very low temperatures)

TYPE	S.W.L	SHEAVE DIA	SHACKLE A1	HOOK A2	B	C	WIRE ROPE SIZE	WEIGHT
SHACKLE	TON		mm					kg
GSSB 752	2	75	286	292	82	70	7~9	4
GSSB 1154	4	115	345	358	120	70	10~12	6.1
GSSB 1504	4	150	399	412	160	70	16~18	13.8
GSSB 1508	8	150	475	498	160	93	20~22	14.4
GSSB 2008	8	200	528	549	210	93	20~22	16
GSSB 20015	15	200	663	672	230	102	22~24	24
GSSB 25010	10	250	679	695	260	115	24~26	37.5
GSSB 25012	12	250	679	701	260	115	24~26	42
GSSB 30012	12	300	767	797	310	133	24~26	56
GSSB 30015	15	300	884	797	365	133	26~28	65
GSSB 35522	22	355	952	960	365	140	28~32	90
GSSB 40022	22	400	1019	1027	415	140	28~32	108
GSSB 40030	30	400	1126	1085	415	155	32~35	135
GSSB 50030	30	500	1256	1177	514	162	32~35	210

#### Operational Cautions

- Do not exceed WLL (Working Load Limit)
- Not to be used for lifting people.
- To be operated by suitable qualified personnel only.
- Inspect all lifting equipment prior to operating.  
(Globesafe can supply Pre-Use check lists and Manuals on request)



# GLOBESAFE LTD

## GLOBESAFE PRODUCTS

### POLYESTER WEBBING SLING (EN1492-1)

#### Description

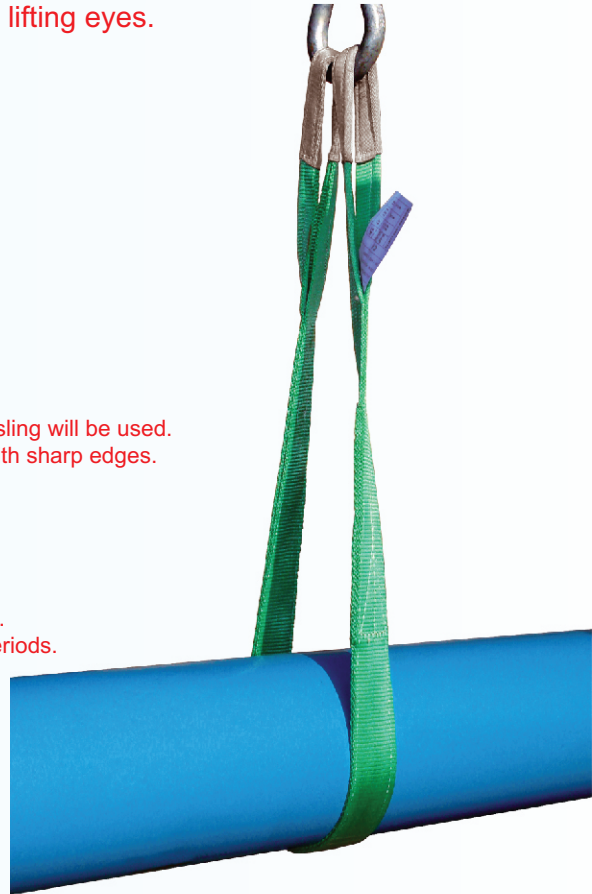
Double ply polyester webbing sling with reinforced lifting eyes.

#### Product Features











- Colour coded according to EN 1492-1.
- Factor of safety 7:1
- The safe working load is clearly printed on the label.
- High quality Duplex webbing provides low elongation.
- Each sling is packed in plastic with CE declaration of conformity or Test Certificate.

#### OPERATIONAL CAUTIONS

- Do not exceed Working Load Limit.
- Prevent shock-loading.
- When selecting a sling always consider the angles at which the sling will be used.
- Always use wear sleeves when slings are used to lifting items with sharp edges.
- Do not use a damaged sling.
- Never make knots in a sling.
- Never drag a sling from underneath a load that is resting on it.
- Chemical active environments can effect the strength of slings.
- Operating temperature range:-40 C to +100 C.
- Inspect slings weekly or more frequently depending on sling use.
- Store slings in a cool dry & dark place when not used for long periods.
- Always read the operating instructions before use.



When ordering please state the working length required.

Lifting Eye Type  Folded eye 1/2 width from 2 sides		Working Load Limit with 1 webbing sling					Working Load Limit with 2 webbing slings			
		Straight Lift	Choked Lift	$\beta$			Straight Lift up to 45	Choked Lift up to 45	Straight Lift 45-60	Choked Lift 45-60
				0-7	7-45	45-60				
Item code	Colour Coded according to EN 1492-1									
		1.0	0.8	2.0	1.4	1.0	1.4	1.12	1.0	0.8
WSDP-201	WLL 1T	1.000	800	2.000	1.400	1.000	1.400	1.120	1.000	800
WSDP-202	WLL 2T	2.000	1.600	4.000	2.800	2.000	2.800	2.240	2.000	1.600
WSDP-203	WLL 3T	3.000	2.400	6.000	4.200	3.000	4.200	3.360	3.000	2.400
WSDP-204	WLL 4T	4.000	3.200	8.000	5.600	4.000	5.600	4.480	4.000	3.200
WSDP-205	WLL 5T	5.000	4.000	10.000	7.000	5.000	7.000	5.600	5.000	4.000
WSDP-206	WLL 6T	6,000	4,800	12,000	8,400	6,000	8,400	6,720	6,000	4,800
WSDP-208	WLL 8T	8,000	6,400	16,000	11,200	8,000	12,000	8,960	8,000	6,400
WSDP-210	WLL 10T	10,000	8,000	20,000	14,000	10,000	14,000	11,200	10,000	8,000
WSDP-212	WLL 12T	12,000	9,600	24,000	16,800	12,000	16,800	13,440	12,000	9,600

\* Larger Capacities Available On Request





# GLOBESAFE LTD

## GLOBESAFE PRODUCTS

### POLYESTER ROUND SLING (EN1492-2)

#### Description

Polyester round sling with two ply woven heavy sleeve.

#### Product Features

- Colour coded according to EN 1492-2
- Factor of safety 7:1
- Capacity stripes; each stripe is equal to 1 tonne capacity.
- Working load limits are clearly printed on the sleeve.
- Extra strong PU-impregnated webbing of the sleeve which does not allow dirt to enter.
- Each sling is packed in plastic with CE declaration of conformity or Test Certificate.
- Low elongation.
- Extremely wear-resistant.

#### OPERATIONAL CAUTIONS

- Do not exceed Working Load Limit.
- Prevent shock-loading.
- When selecting a sling always consider the angles at which the sling will be used.
- Always use wear sleeves when slings are used to lifting items with sharp edges.
- Do not use a damaged sling.
- Never make knots in a sling.
- Never drag a sling from underneath a load that is resting on it.
- Chemical active environments can effect the strength of slings.
- Operating temperature range:-40 C to +100 C.
- Inspect slings weekly or more frequently depending on sling use.
- Store slings in a cool dry & dark place when not used for long periods.
- Always read the operating instructions before use.



POLYESTER  
ROUND SLING



← Working length →

When ordering:

It is important to specify whether the length is circumference or effective working length.

Item code	Colour Coded according to EN 1492-2	Working Load Limit with 1 round sling							WLL with 2 round slings			
		Straight Lift	Choked Lift	$\beta$					Straight Lift up to 45	Choked Lift up to 45	Straight Lift 45-60	Choked Lift 45-60
				0-7	7-45	45-60	7-45	45-60				
		1.0	0.8	2.0	1.4	1.0	0.7	0.5	1.4	1.12	1.0	0.8
RSEL-01	WLL 1T	1.000	800	2.000	1.400	1.000	700	500	1.400	1.120	1.000	800
RSEL-02	WLL 2T	2.000	1.600	4.000	2.800	2.000	1.400	1.000	2.800	2.240	2.000	1.600
RSEL-03	WLL 3T	3.000	2.400	6.000	4.200	3.000	2.100	1.500	4.200	3.360	3.000	2.400
RSEL-04	WLL 4T	4.000	3.200	8.000	5.600	4.000	2.800	2.000	5.600	4.480	4.000	3.200
RSEL-05	WLL 5T	5.000	4.000	10.000	7.000	5.000	3.500	2.500	7.000	5.600	5.000	4.000
RSEL-06	WLL 6T	6,000	4,800	12,000	8,400	6,000	4,200	3,000	8,400	6,720	6,000	4,800
RSEL-08	WLL 8T	8,000	6,400	16,000	11,200	8,000	5,600	4,000	12,000	8,960	8,000	6,400
RSEL-10	WLL 10T	10,000	8,000	20,000	14,000	10,000	7,000	5,000	14,000	11,200	10,000	8,000
RSEL-12	WLL 12T	12,000	9,600	24,000	16,800	12,000	8,400	6,000	16,800	13,440	12,000	9,600

\* Larger Capacities Available On Request







# GLOBESAFE LTD

## GLOBESAFE PRODUCTS

### TURNBUCKLES

#### Description

Turnbuckles to US Federal specification (FF-T-791B).

			
EYE & HOOK	EYE & EYE	EYE & JAW	JAW & JAW

ITEM NO	Size Diameter x Take-Up	Average Overall Length with Ends in Closed Position	Approx. Weight Each (lbs)					Work Load Limit (lbs)	
			Eyes and/or Hooks	Jaw & Eye	Jaw & Jaw	Stub End	Body Only	Hook & Hook Hook & Eye	Eye & Eye Jaw & Jaw Jaw & Jaw Stub End
024001	1/4"x4"	8-1/4	0.30	0.30	0.40	0.29	0.17	400	500
024002	5/16"x4-1/2"	9-9/16	0.50	0.35	0.58	0.46	0.25	700	800
024003	3/8"x6"	11-7/8	0.75	0.82	0.93	0.75	0.30	1.000	1.200
024004	1/2"x6"	13-5/16	1.50	1.62	1.68	1.36	0.55	1.500	2.200
024005	1/2"x9"	16-5/16	1.75	1.82	1.85	1.69	0.74	1.500	2.200
024006	1/2"x12"	19-5/16	2.18	2.19	2.20	2.0	0.93	1.500	2.200
024007	5/8"x6"	15-1/2	2.63	2.59	2.82	2.15	0.91	2.250	3.500
024008	5/8"x9"	18-1/2	3.00	3.01	3.25	2.70	1.20	2.250	3.500
024009	5/8"x12"	21-1/2	3.25	3.50	3.75	3.22	1.50	2.250	3.500
024010	3/4"x6"	17	3.75	4.25	4.68	3.25	1.30	3.000	5.200
024011	3/4"x9"	20	4.50	5.00	5.38	4.00	1.70	3.000	5.200
024012	3/4"x12"	23	5.75	5.75	6.12	4.65	2.12	3.000	5.200
024013	3/4"x18"	29	7.00	7.25	7.25	6.12	2.93	3.000	5.200
024014	7/8"x6"	18	-	-	-	4.75	2.00	-	7.200
024015	7/8"x12"	24-5/8	8.38	8.88	9.36	6.67	3.00	4.000	7.200
024016	7/8"x18"	30-5/8	10.25	10.60	11.44	8.75	4.12	4.000	7.200
024017	1"x6"	20-5/8	-	-	-	6.41	2.50	-	10.000
024018	1"x12"	26-5/8	11.25	12.00	12.88	8.90	3.86	5.000	10.000
024019	1"x18"	32-5/8	14.00	14.75	16.10	11.70	5.50	5.000	10.000
024020	1"x24"	38-5/8	17.00	17.75	18.60	14.30	7.00	5.000	10.000
024021	1-1/4"x6"	20	-	-	-	10.40	4.00	-	15.200
024022	1-1/4"x12"	29-7/8	19.00	21.20	23.60	14.20	5.93	-	15.200
024023	1-1/4"x18"	35-7/8	24.10	26.00	26.60	18.00	8.00	-	15.200
024024	1-1/4"x24"	41-7/8	25.00	28.70	31.20	21.80	10.00	-	15.200
024025	1-1/2"x6"	22-1/8	-	-	-	15.40	5.80	-	21.400
024026	1-1/2"x12"	32-3/8	27.00	31.10	35.50	20.50	8.40	-	21.400
024027	1-1/2"x18"	38-3/8	31.20	36.40	40.70	26.20	11.50	-	21.400
024028	1-1/2"x24"	44-3/8	38.20	44.20	47.60	31.40	14.10	-	21.400
024029	1-3/4"x6"	-	-	-	-	22.70	8.75	-	28.000
024030	1-3/4"x18"	41-3/4	45.00	48.80	52.40	-	-	-	28.000
024031	1-3/4"x24"	47-3/4	58.00	60.00	64.00	43.90	19.50	-	28.000
024032	2"x6"	-	-	-	-	31.50	12.50	-	37.000
024033	2"x24"	51-3/4	90.00	102.00	115.00	60.30	27.50	-	37.000
024034	2-1/2"x6"	-	-	-	-	60.80	27.00	-	60.000
024035	2-1/2"x24"	51-1/2	183.00	180.00	200.00	110.00	54.00	-	60.000
024036	2-3/4"x24"	61-1/2	180.00	214.00	248.00	-	54.00	-	75.000



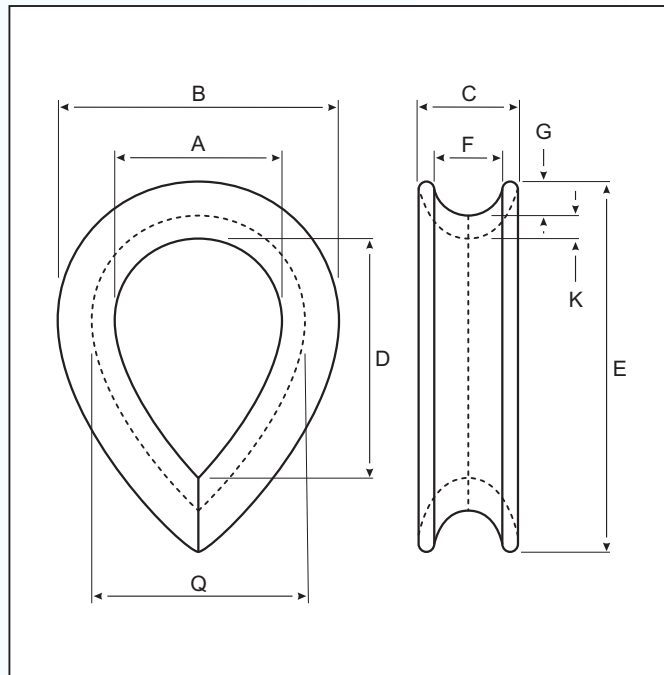
# GLOBESAFE LTD

## GLOBESAFE PRODUCTS

### WIRE ROPE THIMBLE

#### Description

BS464 Galvanised Wire Rope Thimble.



Item	Size/Inch (Dia of Rope)	Size/mm (Dia. of Rope)	A/mm	B/mm	C/mm min.	D/mm	E/mm	F/mm min.	G/mm	K/mm min.	Q/mm
T46408	5/16	8	22.2	38	12.7	33.4	52	7.9	4	4	30.1
T46409	3/8	9	25.4	47.6	14.3	38	64	10.3	6.3	4.8	35
T46411	7/16	11	28.6	52	17.5	41.3	73	12.7	7.9	4.8	38
T46413	1/2	13	31.7	58.8	20.6	44.5	79.4	14.3	7.9	5.5	42.9
T46414	9/16	14	31.7	58.8	20.6	44.5	79.4	14.3	7.9	5.5	42.9
T46416	5/8	16	41.3	74.5	22.2	58.8	95.8	15.9	8.7	7.9	56
T46417	11/16	17	44.5	79.4	28.6	66.6	108	19	9.5	7.9	60.4
T46419	3/4	19	50.8	92	28.6	73	124	20.6	11.1	9.5	69.8
T46421	13/16	21	50.8	92	28.6	73	121	20.6	11.1	9.5	69.8
T46422	7/8	22	56	102	31.7	82.5	131	22.2	12.7	9.5	76.2
T46424	15/16	24	64	110	33.4	92	146	25.4	12.7	10.3	84
T46425	1	25	69.8	119	35	108	162	27	14.3	10.3	90.5
T46429	1-1/8	29	76.2	133	38	112	178	28.6	15.9	12.7	102
T46432	1-1/4	32	95	152	41.3	133	197	33.4	15.9	12.7	121
T46435	1-3/8	35	105	175	47.6	152	228	38	19	15.9	137
T46438	1-1/2	38	114	197	52	165	254	41.3	23.8	17.5	149
T46441	1-5/8	41	114	197	55.6	165	254	42.9	23.8	17.5	149
T46444	1-3/4	44	127	228	56	178	286	50.8	25.4	25.4	178
T46448	1-7/8	48	133	248	66.6	190	317	60.4	28.6	25.4	190
T46451	2	51	140	257	69.8	203	330	64	30.1	28.6	197
T46454	2-1/8	54	140	257	69.8	203	330	64	30.1	28.6	197
T46457	2-1/4	57	146	296	76.2	216	356	66.6	31.7	30.1	206
T46464	2-1/2	64	159	311	95	242	414	69.8	44.5	31.7	222



# GLOBESAFE LTD

## GLOBESAFE PRODUCTS

### WIRE ROPE CLIPS



**DIN 741 MALLEABLE WIRE ROPE CLIP (GALVANISED)**

Item	Size (mm)	N.W. kg/100pcs	Item	Size (mm)	N.W. kg/100pcs
WRCD03	3	1.4	WRCD16	16	21.0
WRCD05	5	1.5	WRCD19	19	28
WRCD06	6.5	2.1	WRCD22	22	40
WRCD08	8	4.1	WRCD16	26	44
WRCD10	10	6.8	WRCD30	30	66
WRCD11	11	7.2	WRCD34	34	85
WRCD13	13	13	WRCD40	40	104
WRCD14	14	13.5			



**U.S. TYPE FORGED WIRE ROPE CLIP (GALVANISED)**

Item	Size (Inch)	N.W. lbs/100pcs	Item	Size (Inch)	N.W. lbs/100pcs
WRCH03	1/8	5	WRCH22	7/8	240
WRCH05	3/16	9	WRCH26	1	250
WRCH06	1/4	18	WRCH30	1-1/8	310
WRCH08	5/16	30	WRCH32	1-1/4	460
WRCH10	3/8	42	WRCH36	1-3/8	520
WRCH11	7/16	70	WRCH38	1-1/2	590
WRCH13	1/2	75	WRCH42	1-5/8	730
WRCH14	9/16	100	WRCH45	1-3/4	980
WRCH16	5/8	100	WRCH50	2	1340
WRCH19	3/4	150	WRCH58	2-1/4	1570



# GLOBESAFE LTD

## GLOBESAFE PRODUCTS

### GLOBESAFE LASHING SYSTEMS

#### RATCHET TIE DOWN

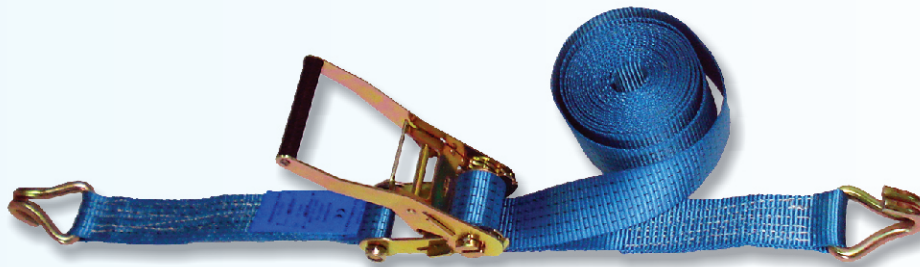
Webbing type Ratchet Lashings are used for tying down loads whilst transporting, shifting or moving them, and for a variety of other applications.











The advantages of using ratchet lashings:

- Load restraint using a ratchet tensioning device.
- Effective and safe control of loads being transported.
- Extremely quick and efficient tie down and release of loads.
- No damage to the load being tied down.
- More elastic than chain systems and therefore retains more tension if the load moves or settles.
- Available in a variety of configurations of different ratchets, capacities and end fittings.
- Easy storage.

#### PRODUCT FEATURES

- Manufactured in compliance with load restraint assemblies on road vehicles standards BSEN12195-2.



	RATCHET TIE DOWN (Two piece with ends)				
	Item code	Web Width	Standard Length	End Fittings	M.B.S
	RTD25.8DJ	25mm	0.4 + 4.6M	Double J Hook	800 Kg
	RTD25.8TG	25mm	0.4 + 4.6M	"D" Link	800 Kg
	RTD505DJ	50mm	0.5 + 7.5M	Double J Hook	5,000 Kg
	RTD505TG	50mm	0.5 + 7.5M	"D" Link	5,000 Kg
	RTD7510DJ	75mm	0.5 + 9.5M	Double J Hook	10,000 Kg
	RATCHET TIE DOWN (Endless - Plain end)				
	Item code	Web Width	Standard Length	Buckle	M.B.S
	ETD25.8	25mm	5M	Ratchet	800 Kg
	ETD505	50mm	8M	Ratchet	5,000 Kg
	ETD7510	75mm	10M	Ratchet	10,000 Kg
OTHER LENGTHS AVAILABLE ON REQUEST					





# GLOBESAFE LTD

## GLOBESAFE PRODUCTS

### GLOBESAFE LASHING SYSTEMS

#### LOAD BINDERS

Load Binders are used for tensioning chain being used for tying down loads being transported, and for a variety of other applications.

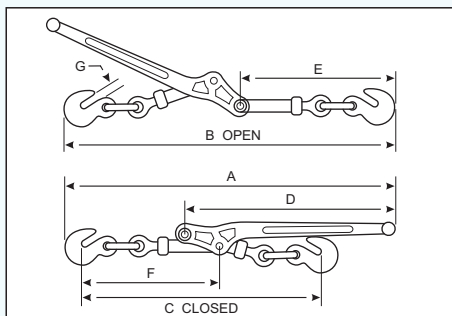
#### The advantages of using chain lashing / load restraint:

- Load restraint using secure & strong chain and tensioning devices.
- Effective and safe control of loads being transported.
- High resistance to wear, Long product life.

#### PRODUCT FEATURES.

- Manufactured in compliance with cargo restraint assemblies on road vehicles standards AS/NZS 4344 / BSEN12195.
- Test certificates available on request
- Heat treated - drop forged steel for ultimate strength
- 360° swivel hook for easy handling

#### LEVER LOAD BINDER

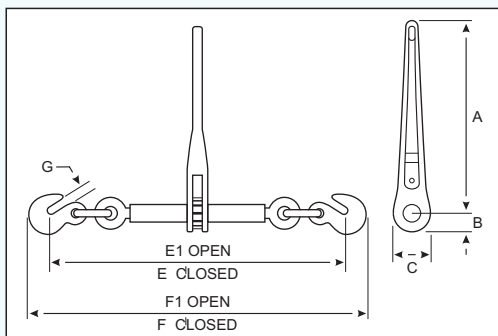


Item	Chain Size mm	Chain Size (in)	Working Load Limit Kgf	Proof Load Kgf	Minimum Ultimate Load Kgf	Weight Kg	Handle Lenght mm	Dimensions mm						
								A	B	C	D	E	F	G
LLBH08	8	1/4-5/16	1179	2356	3538	1.6	290	470	439	360	290	210	205	9
LLBH10	10	5/16-3/8	2449	4899	8618	3.8	392	640	589	495	395	295	285	13
LLBH13	13	3/8-1/2	4173	8346	14968	5.5	439	724	670	560	448	330	310	15

#### RATCHET LOAD BINDER

Well suited to tensioning short chains and for loads such as rubber tired vehicles.

Very high tensioning forces can be achieved, even on short chains, and more precise adjustment is available. Ratchet load binders have no whip when released.



Item	Chain Size mm	Chain Size (in)	Working Load Limit Kg	Proof Load Kg	Minimum Ultimate Load Kg	Weight Kg	Handle Length mm	Dimensions mm							
								A	B	C	E	E1	F	F1	G
RLBH08	8	1/4-5/16	1179	2356	4173	1.6	182	182	22	45	412	540	452	580	9
RLBH10	10	5/16-3/8	2449	4899	8618	4.8	353	353	33	66	575	778	641	844	13
RLBH13	13	3/8-1/2	4173	8346	14968	5.9	353	353	33	66	613	816	687	890	15



# GLOBESAFE LTD

## GLOBESAFE PRODUCTS

### GLOBESAFE LASHING SYSTEMS

#### TRANSPORT CHAIN & FITTINGS

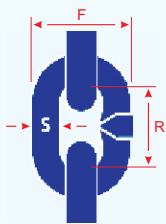
Featuring a distinctive golden finish, GLOBESAFE Chain and fittings form an easy to handle high performance tie-down system, which combines the benefits of cleanliness, lightness, strength and security.

#### The advantages of using transport chain & fittings:

- Load restraint using secure & strong grade 7 chain, fittings, and tensioning devices.
- Comprehensive selection of grab and claw hooks.
- High resistance to wear, Long product life.
- Proof tested.

#### NORMS.

- Manufactured in compliance with cargo restraint assemblies on road vehicles standards AS/NZS 4344 / BSEN12195..
- Test certificates available on request



GRADE 70 CHAIN						
Item	Chain Size	Lashing Capacity	S	R	F	Metres /100kg
	(mm)	(tonnes)	(mm)	(mm)	(mm)	
7CA-8-3.8	8	3.8	8.0	23.8	27.0	68.9
7CA-10-6	10	6.0	10.0	29.6	34.3	45.5
7CA-13-9	13	9.0	12.5	38.0	42.5	29.6



G7 CLEVIS GRAB HOOK			
Item	Chain Size	Lashing Capacity	Weight
	(mm)	(tonnes)	(Kg)
7GK-8	8	3.0	0.32
7GK-10	10	4.5	0.52
7GK-13	13	6.7	1.82



G7 CLEVIS CLAW HOOK			
Item	Chain Size	Lashing Capacity	Weight
	(mm)	(tonnes)	(Kg)
7CK-8	6-8	3.8	0.34
7CK-10	10	6.0	0.67



G7 CLEVIS SLIP HOOK			
Item	Chain Size	Lashing Capacity	Weight
	(mm)	(tonnes)	(Kg)
7SK-8	8	3.8	0.34
7SK-10	10	6.0	0.57
7SK-13	13	9.0	1.31



G7 CLEVIS LUG LINK			
Item	Chain Size	Lashing Capacity	Weight
	(mm)	(tonnes)	(Kg)
7LK-8	8	3.8	0.45
7LK-10	10	6.0	0.65
7LK-13	13	9.0	1.30

#### Operational Cautions

- Ensure that lashing capacity is matched to chain size and hook type.
- The use of grab hooks may cause bending to occur on the link of lashing chain to which the grab hook is engaged. The bending and shearing effect of the grab hook reduces the strength of the chain by 25% and as such, the lashing capacity (LC) of this type of system must be reduced by 25%.
- Not to be used for lifting purposes.

## **GLOBESAFE "ACTIVE SAFETY" POLICY**

Globesafe staff, suppliers and partners are committed to ensuring the highest safety standards achievable through a pro-active approach to all safety related issues.

Should there be any safety issues or concerns with our products or services please contact your supplier as soon as possible for advice.

### **User and Safety related documents are available**

Product specifications  
Test Certificates  
Operator manuals  
Maintenance manuals  
Specific Product Safety information

Industrial References and Charts

### **Manufacturers Standards and Certification**



# LOBESAFE

## Authorised Distributor

RIGMARINE  
Kazakhstan LLP

Residential Estate Birlik  
Industrial Base, Aktau  
Tel: (+7 7292) 750458 / 750459 / 750460  
Fax: (+7 7292) 750461  
Email: [sales@rigmarine.kz](mailto:sales@rigmarine.kz)